



# **EZCast**

## **Quick Start Guide**

# Hardware Installation



1. Please connect EZCast's micro USB port to your power adaptor or USB power (Please make sure your USB power can supply over 500mA)
2. Connect EZCast to your TV/Projector's HDMI port, and switch the TV/Projector's source to it
3. You will see the EZCast main menu pops up and hear the welcome tone.
4. Please download EZCast app on different platforms (Windows/Mac/iOS/Android) to enjoy the WiFi display technology!



Watch setup video: <http://goo.gl/ruSjBV>

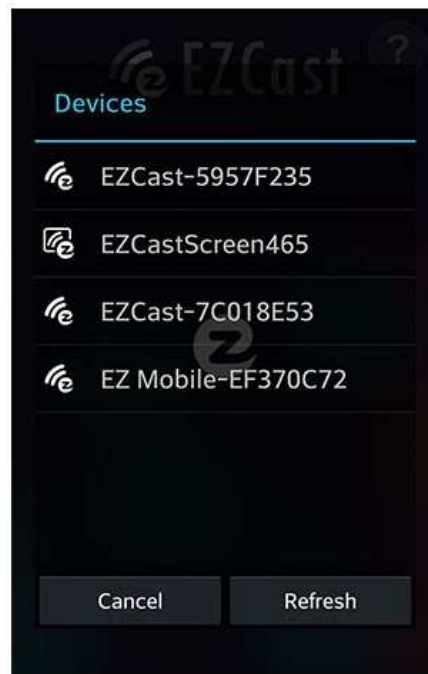
# EZCast for Android

## ● Download & Connection

1. You can use QR code scanner app to scan the QR code on display, then you will be redirected to download our app



2. Or you can search the App name “EZCast” in Google Play.  
(<http://goo.gl/1usQ23>)
3. Before you start the app, we suggest connect your Android device’s WiFi with EZCast dongle SSID (ex: EZCAST-xxxxxxx), however, if you skip WiFi connection first, the EZCast app will allow you to connect to the dongle in app.



4. When you execute the app, you can use “Demo mode” or “Find device” to start over to enjoy our features.
5. Click “Find device” to discover EZCast receiver and start to cast.
6. If you didn’t connect EZCast in the beginning, our android app will

automatically list the EZCast dongle so that you can click it and connect it directly.

7. You will be able to find another EZCast installed phone if they are under the same network, it's a new feature to enhance your mobile phone to an EZCast receiver.
8. We strongly recommend you to establish EZCast dongle's WiFi with your home/company network to keep internet surfing since your mobile device's WiFi is linking to EZCast dongle.



9. Except EZCast dongle, if you have a ChromeCast dongle, you can also find it as an EZCast receiver if your Android device is under same network with your ChromeCast.
10. If you have a ChromeCast dongle, you can also find it as an EZCast receiver if your iPhone is under same network with your ChromeCast.

\*Please be noted not all EZCast features are supported by ChromeCast dongle, to enjoy the best WiFi display experiences, we encourage you to use our EZCast dongle.

Watch EZCast for ChromeCast demo: <http://goo.gl/cDJ2Ut>



For more demo clips or tutorials, please subscribe our Youtube channel: <http://goo.gl/enBNWj>

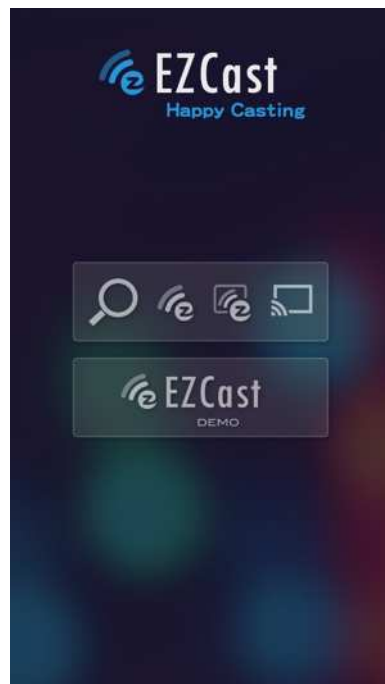
# EZCast for iOS

## ● Download& Connection

1. You can use QR code scanner app to scan the QR code on display, then you will be redirected to download our app:



2. Or you can search the App name “EZCast” in App Store.  
(<http://goo.gl/TUA7tz>)
3. Before you start the app, please connect your iOS device’s WiFi with EZCast dongle SSID (ex: EZCAST-xxxxxxx)



4. When you execute the app, you can use “Demo mode” or “Find device” to start over to enjoy our features.
5. Click “Find device” to discover EZCast receiver and start to cast.
6. In the first time of app launching, we will pop up WiFi router list so that you can force EZCast dongle to connectHome WiFi router to keep internet surfing. (we strongly recommend you to establish EZCast dongle’s WiFi with your home/company networkto keep internet surfing since your mobile device’s WiFi is linking to EZCast dongle.)



7. Except EZCast dongle, if you have a ChromeCast dongle, you can also find it as an EZCast receiver if your iPhone is under same network with your Chromecast.
8. In the demo mode, you can see all the major features demo even without connecting to EZCast dongle.

\*Please be noted not all EZCast features are supported by ChromeCast dongle, to enjoy the best WiFi display experiences, we encourage you to use our EZCast dongle.

Watch EZCast for ChromeCast demo: <http://goo.gl/cDJ2Ut>



For more demo clips or tutorials, please subscribe our Youtube channel: <http://goo.gl/enBNWj>

# EZCast For Windows

## ● System requirements

CPU	Dual Core 2 GHz or higher (ATOM not supported)
Graphic card	Graphic card with 64MB VRAM or above
OS version	Windows 7 SP1, Windows 8/8.1 and above
PC's WiFi	802.11n (2T2R recommended)

\*Audio will not be supported on XP, and extension mode is not available on Win8 now.

## ● Download& Connection

1. You can download Windows app from [www.iezvu.com](http://www.iezvu.com)



### Windows EZCast 7/8 Download -Latest version 1.0.0.143 Date:2014-06-05

EZCast application for Windows version, developed by WinnerWave, displays your Windows embedded PC and Notebook wirelessly via EZCast

 Download

[Read Full Description>>](#)

### Windows EZCast Portable Version

EZCast Green version developed by WinnerWave, displays your Windows embedded PC and Notebook wirelessly via EZCast

 Download

[Read Full Description>>](#)

### Windows EZCast XP/Vista Download

EZCast application for Windows version, developed by WinnerWave, displays your Windows embedded PC and Notebook

 Download

[Read Full Description>>](#)

2. Select the version you would like to download.
3. Please connect EZCast dongle and power on.
4. After installation and restart your PC to take affected for our app.
5. Before you start the app, we suggest connect your PC's WiFi with EZCast dongle SSID (ex: EZCAST-xxxxxxx), then execute EZCast app
6. Execute EZCast and allow access.

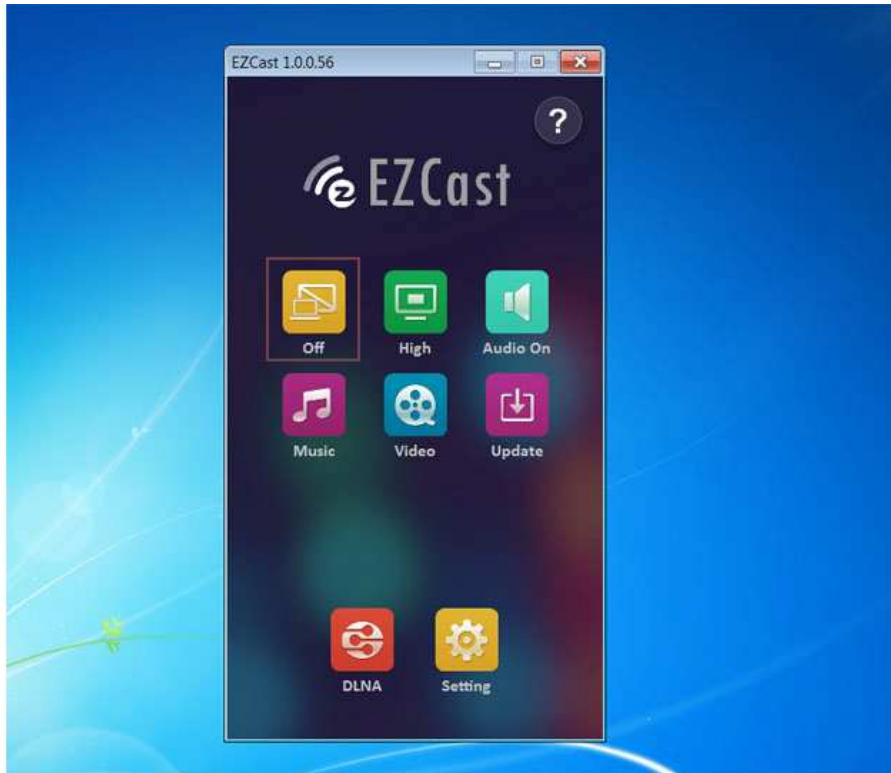


7. The EZCast will be listed, select the device ID and connect with it.



8. Now you can enjoy our WiFi display technology!





For more demo clips or tutorials, please subscribe our Youtube channel: <http://goo.gl/enBNWj>

# EZCast For Mac OS X

## ● System requirements

CPU	Dual Core Intel Core i.4 GHz or higher( <b>PowerPC not supported</b> )
Graphic card	Graphic card with 64MB VRAM or above
OS version	Mac OS X 10.9 and above
Recommended Models	Mac Book series and iMac series after E/2011

## ● Download&Cinnection

1. You candownloadEZCast Mac OS app from [www.iezvu.com](http://www.iezvu.com)



**Mac OS Download -Latest version 1.0.70 Date:2014-06-05**

EZCast application for Mac version, developed by WinnerWave, displays your Mac OS embedded iMac, Macbook and MacAir wirelessly via EZCast devices or platforms.

Requirements:

Mac OS 10.8 above.

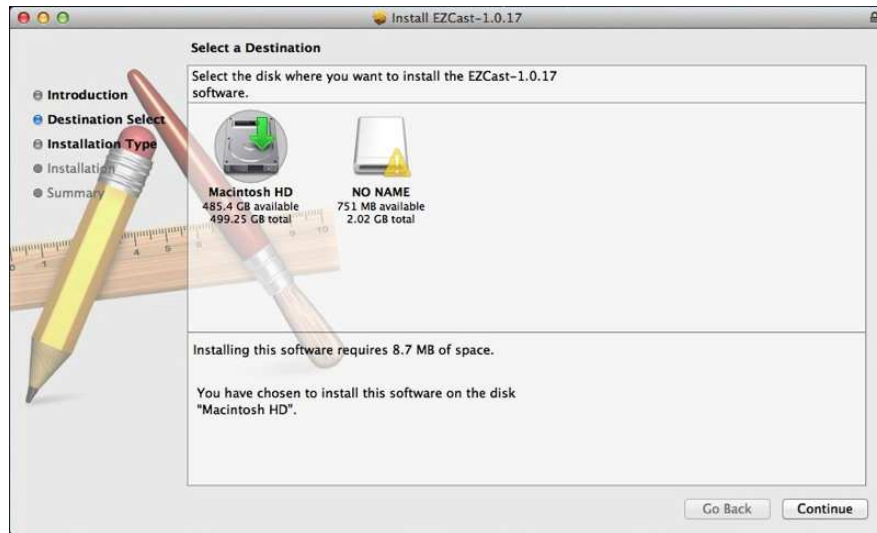
Supports Extension and Mirror with audio transmission.

Supports music and video streaming.

 **Download**



2. After download is done, double click it for installation.
3. Install EZCast app in to Macintosh HD



4. We will also install Audio driver, please continue installation when the screen pops up.



5. Please restart after installation is done.



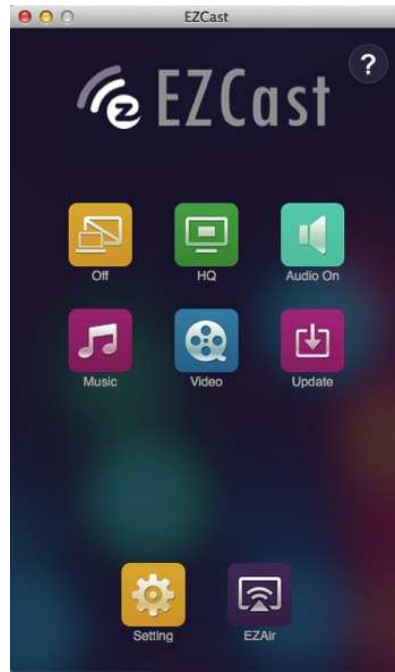
6. After re-booting, you will be able to find EZCast app under applications.

7. Please connect WiFi with EZCast dongle before launching EZCast app.



8. If your WiFi is connected with EZCast, and open the app, it will search and discover EZCast dongle automatically and shows app main page as follows:

Rev. 1.00



For more demo clips or tutorials, please subscribe our Youtube channel: <http://goo.gl/enBNWj>